

Digi-Pas®

Innovation & Technology Driven™

PC SYNC PROFESSIONAL SOFTWARE USER MANUAL



Model: DWL2000XY



REVISION 2.00

www.digipas.com

Note: Contents in this instruction manual is continuously updated, please check Digi-Pas website for latest version.

INTELLECTUAL PROPERTY

This manual contains propriety information, which is protected by copyrights. All rights are reserved. No part of this manual may be photocopied, reproduced, redistributed or translated to another language without prior written consent of JSB TECH Company.

The information in this manual was correct at the time of printing, stored in CD or uploaded in the Company website. However, JSB TECH will continue to improve products and reserves the rights to change specification and maintenance procedures at any time without prior notice.

The PC Sync software uses the National Instruments™ Measurement Studio* for certain user interface tools and measurement applications.

Digi-Pas® Products were manufactured under ISO9001 & ISO14001 standards, tested to comply by the followings certification bodies:



Digi-Pas®, the Digi-Pas® logo are registered trademarks of JSB TECH Pte Ltd. © 2018. All rights reserved.

*National Instrument™ logo is the trademarks of ational Instruments Corporation. Microsoft is the registered trademarks of Microsoft Corporation.

TABLE OF CONTENT

CHAPTER 1: GENERAL OVERVIEW

- Interface Overview
- Software Features

CHAPTER 2: SYSTEM REQUIREMENTS

CHAPTER 3: GETTING STARTED

- Installation of DWL2000XY PC Sync
- Synchronization with USB

CHAPTER 4: FEATURES INTERFACE AND SETTING

- Single Angle Meter
- Dual Angle Meter
- Dual Axis Bull's Eye
- Single Angle Graph




CHAPTER 1: GENERAL OVERVIEW






Interface Overview



Communication Status	To show the communication status between PC, device and DigiPas® Security Dongle.
Communication LED	To indicate the device is connected to the software
Function Toolbar	Contains buttons with different functions.
Screen Display	To display the graphic user interface.

Software Features

 <p>Single Angle Meter</p>	<p>Single Angle Meter</p> <p>This feature allows user to view single-axis angle/levelling measurement in numerical and graphical display i.e. degree, mm/M & In/Ft units concurrently on PC monitor via USB or wireless Bluetooth connectivity.</p>
 <p>Dual Angle Meter</p>	<p>Dual Angle Meter</p> <p>This feature allows user to view dual-axis angle/levelling measurement simultaneously in numerical and graphical in degree, mm/M & In/Ft units concurrently on PC monitor via USB or wireless Bluetooth connectivity.</p>
 <p>Dual Axis Bull's Eye</p>	<p>Dual Axis Bull's Eye</p> <p>This feature allows user to view and record dual-axis angle/levelling measurement simultaneously in graphical "Bull's eye", line graphs, Numeric format on degree, mm/M & In/Ft units. User may define several parameters for data capturing. The numerical data can be saved in Excel format for further analysis.</p>

 <p>Single Angle Graph</p>	<p>Single Angle Graph</p> <p>This feature allows user to view, track and record real-time single-axis angle/levelling measurement readings in numerical and graphical forms (i.e. degree, mm/M & In/Ft). User may define parameters for numerical data capturing.</p>
 <p>Commission Report</p>	<p>Commission Report</p> <p>Numerical and graphical data can be collected and stored in PC in the form of Commissioning Report files especially useful for accountability purpose and references as historical records for each machine/equipment installation, setup and preventive maintenance requirements. Multiple machines characteristics for levelling and vibration conditions can be stored and used for comparison in next planned preventive maintenance activity.</p>
 <p>DigiPas Website</p>	<p>DigiPas Website</p> <p>Direct user to DigiPas® Website for further detailed information.</p>
 <p>Help</p>	<p>Help</p> <p>To open the Instruction Manual for the device and its Instruction manual.</p>
 <p>About</p>	<p>About</p> <p>This feature allows user to check the current PC Sync version and the firmware version of the device in sync.</p>

CHAPTER 2: SYSTEM REQUIREMENTS

Recommended System Configuration:

- * At least 1 GB of RAM
- * At least 50MB of free disk space available in your hard disk
- * DVD-ROM
- * USB Ports

Note: Software performance may vary depends on PC system configuration.

Recommended Operating System:

- * Windows XP with Service Pack 3
- * Windows Vista
- * Windows 7

Digi-Pas® PC Sync software can be configured in 32bit or 64 bit Microsoft Windows Operating Systems.

Required Third-Party Software:

- * Microsoft .Net Framework 3.5 for 32bit Windows Operating System
- * Microsoft .Net Framework 4.0 for 64bit Windows Operating System
- * Microsoft Excel 2007 or above
- * Acrobat Reader

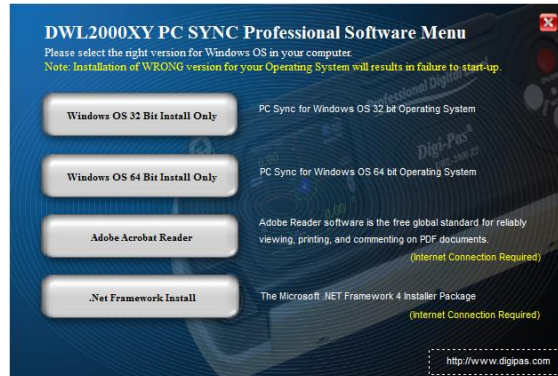
Note:

Certain function of the software requires internet connection to operate.

CHAPTER 3: GETTING STARTED

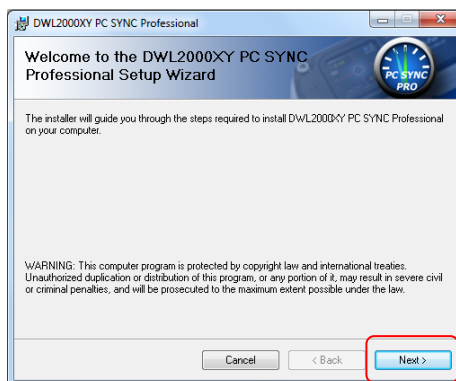
Installation of DWL2000XY PC Sync

1. Insert DWL2000XY PC Sync DVD into your DVD drive. The following screen pops up automatically. Select the Adobe Acrobat Reader or .Net Framework button when your computer does not have the software. It needs internet connection to complete the installation. Next, click the PC Sync installation button according to your Window Operating System (32bit or 64 bit).



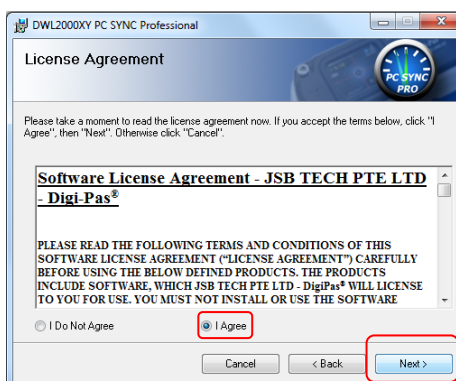
Installation Step 1

2. Welcome screen appears. Click "Next" to proceed the installation.



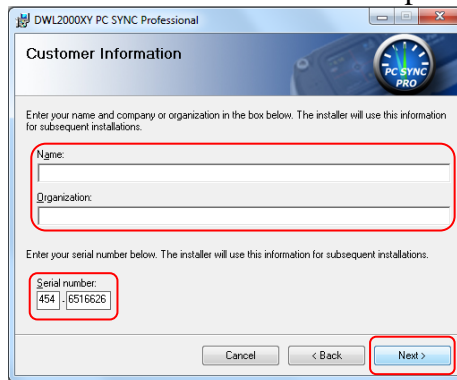
Installation Step 2

3. License Agreement screen appears. Click "I Agree" after reading through and accepting the agreement and then click "Next" to proceed the installation.



Installation Step 3

4. Customer Information screen appears. Enter your Name and Organization. Key in Device's **Serial Number** attached in the DVD box. Click "Next" to proceed the installation.



DWL2000XY PC SYNC Professional

Customer Information

Enter your name and company or organization in the box below. The installer will use this information for subsequent installations.

Name:

Organization:

Enter your serial number below. The installer will use this information for subsequent installations.

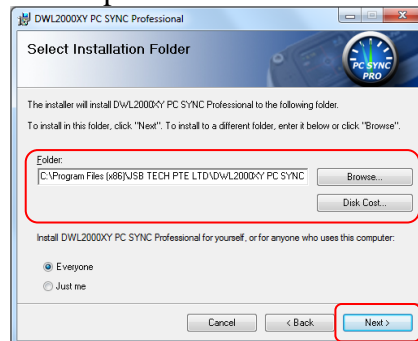
Serial number:

454 6516626

Cancel < Back Next >

Installation Step 4

5. Installation folder screen appears. Use the installation folder as default unless you want to change the location. Click "Next" to proceed the installation.



DWL2000XY PC SYNC Professional

Select Installation Folder

The installer will install DWL2000XY PC SYNC Professional to the following folder.

To install in this folder, click "Next". To install to a different folder, enter it below or click "Browse".

Folder:

C:\Program Files (x86)\USB TECH PTE LTD\DWL2000XY PC SYNC

Browse...

Disk Cost...

Install DWL2000XY PC SYNC Professional for yourself, or for anyone who uses this computer:

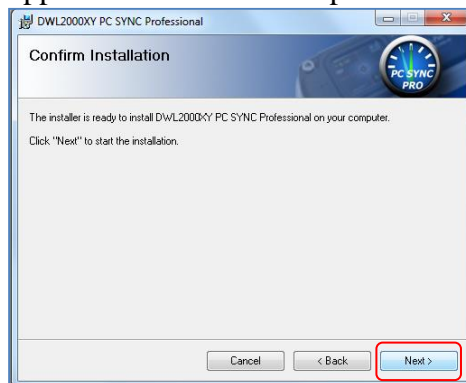
☒ Everyone

☐ Just me

Cancel < Back Next >

Installation Step 5

6. Confirm Installation screen appears. Click "Next" to proceed the installation.



DWL2000XY PC SYNC Professional

Confirm Installation

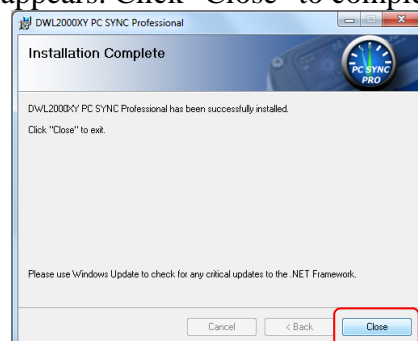
The installer is ready to install DWL2000XY PC SYNC Professional on your computer.

Click "Next" to start the installation.

Cancel < Back Next >

Installation Step 6

7. Installation Complete screen appears. Click "Close" to complete the installation.



DWL2000XY PC SYNC Professional

Installation Complete

DWL2000XY PC SYNC Professional has been successfully installed.

Click "Close" to exit.

Please use Windows Update to check for any critical updates to the .NET Framework.

Cancel < Back Close

Installation Step 7

Synchronization by Using USB Connectivity

1. Double click the PC Sync icon on the desktop.
2. Connect DWL2000XY device with your computer via USB cable and insert the DigiPas® Security Dongle to the computer.
3. All function toolbar buttons are then turned on and the status bar shows "Device Connected and DigiPas® Security Dongle is found". The DWL2000XY PC Sync is ready for use.



Interface of DWL2000XY PC Sync when it is ready to use

CHAPTER 4: FEATURES INTERFACE AND SETTING

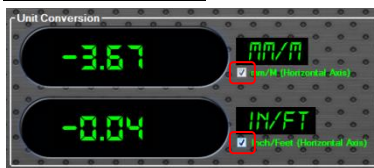


Single Angle Meter



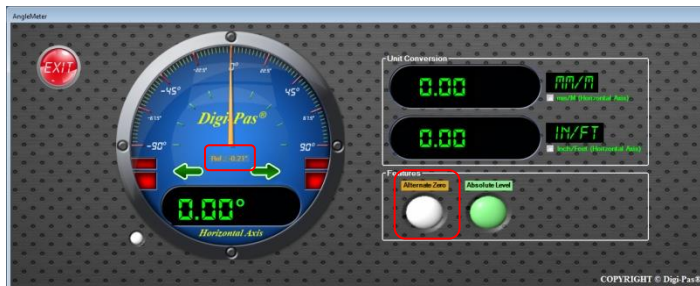
Blinking indicates measurement is in progress

Unit Conversion:



Unit Conversion:
Click the box to start the conversion.

Features:

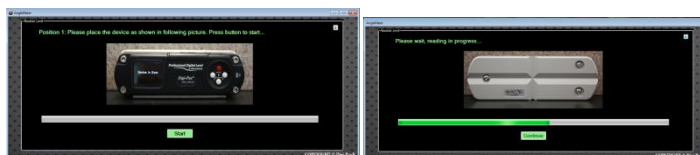


Alternate Zero

Alternate Zero:

Click the Alternate Zero button to start the feature. Reference angle appears and button blinks once activated.

Note: This feature only apply for software version 6.02 and above.



Instructions for Absolute Level

Absolute Level:

Click the Absolute Level button to start the feature. Follow the instructions shows on the screen. Absolute Level symbol appears and button blinks once activated.

Note: This feature only apply for software version 6.02 and above.



Absolute Level



Dual Angle Meter



Unit Conversion:



Click the box to start the conversion.

Features:



Alternate Zero

Alternate Zero:

Click the Alternate Zero button to start the feature. Reference angle appears and button blinks once activated.

Note: This feature only apply for software version 6.02 and above.



Instructions for Absolute Level



Absolute Level

Absolute Level:

Click the Absolute Level button to start the feature. Follow the instructions shows on the screen. Absolute Level symbol appears and button blinks once activated.

Note: This feature only apply for software version 6.02 and above.



Dual Axis Bull's Eye

Measured Value
(Vertical Axis)

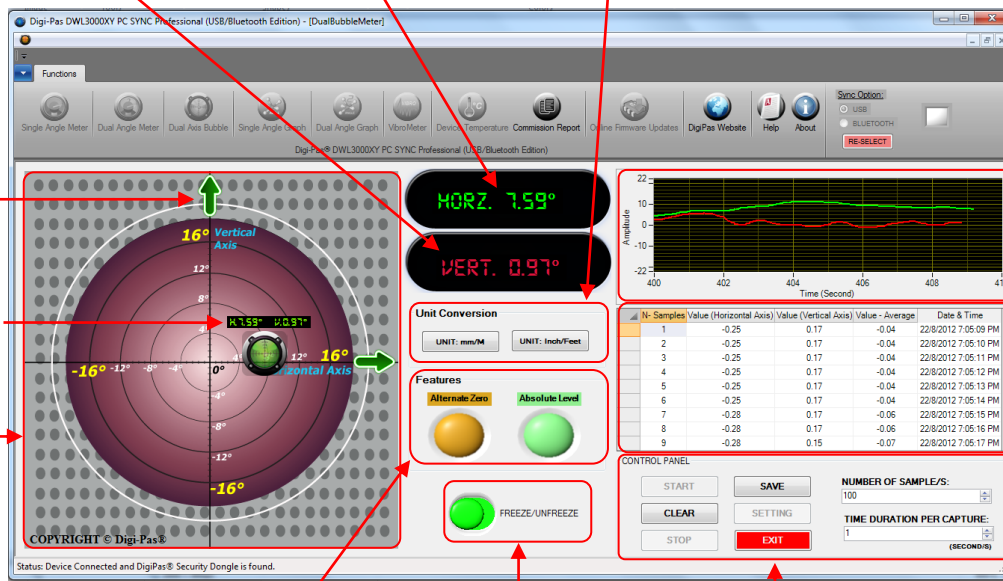
Measured Value
(Horizontal Axis)

Unit Conversion

Higher Side

Measured Value:
H. : Horizontal Axis
V. : Vertical Axis

Bubble Meter



Angle Graph

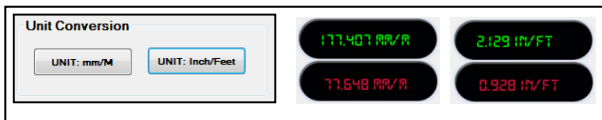
Recorded Data

Features

Freeze or Unfreeze
the measurement

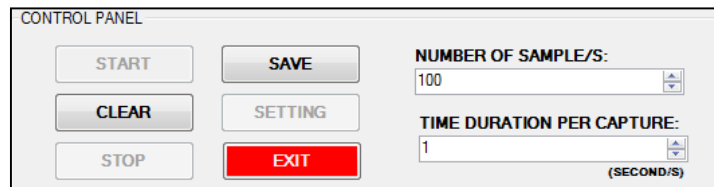
Data Logging
Control Panel

Unit Conversion:



Click the unit conversion button to change to other units
(degree, mm/M, In/Ft).

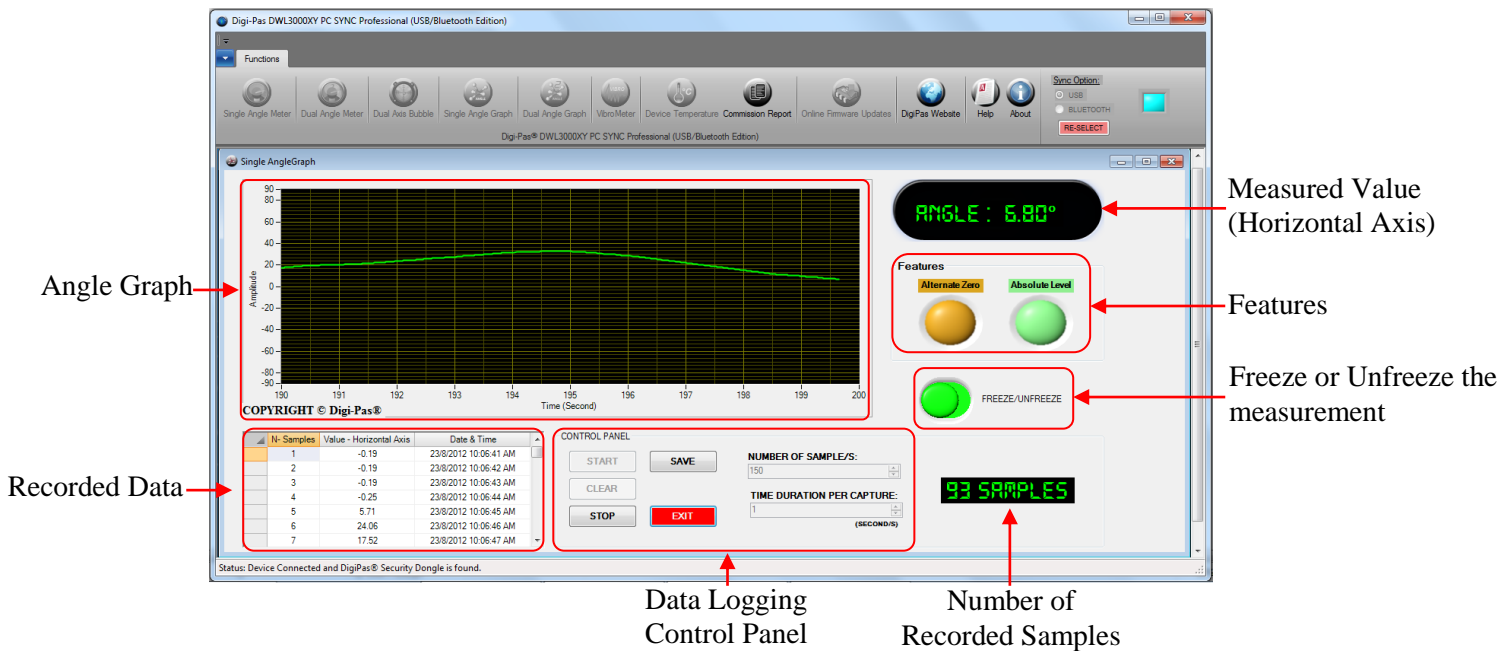
Data Logging Control Panel:



To start data logging, select the number of samples by pressing the up down arrow. Next, select the time duration per capture accordingly. Click START button to initiate data logging. Click STOP button to halt data logging and click CLEAR button to erase or click SAVE button to store the data. The SETTING button can be used to configure the row visibility window of the recorded data. EXIT button is used to quit the Dual Axis Bubble window.



Single Angle Graph



Data Logging Control Panel:

CONTROL PANEL

START SAVE

CLEAR

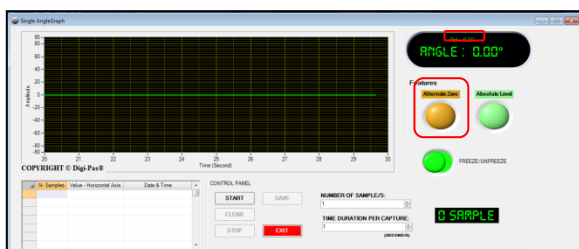
STOP EXIT

NUMBER OF SAMPLE/S: 100

TIME DURATION PER CAPTURE: 1 (SECOND/S)

To start the data logging, select the number of samples by pressing the up down arrow. Next, select the time duration per capture according. Click START button to initiate data logging. Click STOP button to halt data logging and click CLEAR button to erase or click SAVE button to store the data. EXIT button is used for quit Single Angle Graph window.

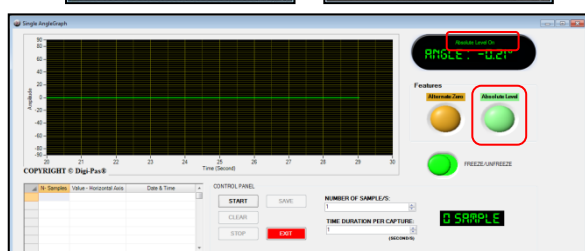
Features:



Alternate Zero:

Click the Alternate Zero button to start the feature. Reference angle appears and button blinks once activated.

Note: This feature only apply for software version 6.02 and above.



Absolute Level:

Click the Absolute Level button to start the feature. Follow the instructions shows on the screen. Absolute Level symbol appears and button blinks once activated.

Note: This feature only apply for software version 6.02 and above.