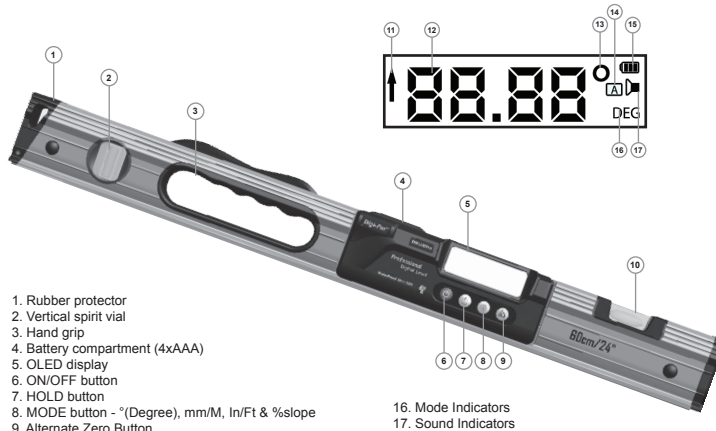


Device Overview



1. Rubber protector
2. Vertical spirit vial
3. Hand grip
4. Battery compartment (4xAAA)
5. OLED display
6. ON/OFF button
7. HOLD button
8. MODE button - °(Degree), mm/M, In/Ft & %slope
9. Alternate Zero Button
10. Horizontal spirit vial
11. Level directional arrow indicator
12. Level Measurement value
13. Unit indicator
14. Alternate zero indicator
15. Battery indicator
16. Mode Indicators
17. Sound Indicators

USER MANUAL

Waterproof

Heavy Duty Digital level

DWL - 680Pro (0.05° Resolution)



Features

Power on/off :

Press & hold the **"ON/OFF"** button for 2 second to turn ON the device. Press the **"ON/OFF"** button again to turn OFF the device.

Note: The device will auto turn off if idle for 3 minutes.

Hold Function:

Press the **"Hold"** button to freeze measurement value on the display. Press again to unfreeze.

Mode Function:

Press the **"Mode"** button to switch between °(Degree), %slope, mm/M, & In/Ft measurement

Buzzer Sound Function:

Press & hold the **"Alternate Zero"** button to turn ON or turn OFF the buzzer sound at 0° & 90°. Sound indicator icon (diagram item 18) will be displayed on screen when the buzzer sound is turned ON.

Alternate Zero Function:

At any point of time, press the **"Alternate Zero"** button to activate the function to set any angle to 0° as reference. Once activated, the alternate zero icon (diagram item 13) will appear on screen. To exit the function for actual angle measurement, press the **"Alternate Zero"** button again to turn OFF the function.



Product of Singapore

® Registered Design

Calibration Instruction

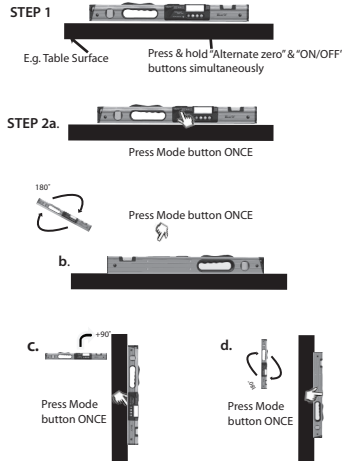
1. Turn off the device, press & hold **'Alternate Zero'** and then **'ON/OFF'** buttons simultaneously, release when the display show flashing **"CAL1"**.
2. a Place the device on a flat and clean surface, press **"MODE"** button once, the screen will display countdown, wait until screen countdown reach **"0"** and show **"CAL2"**.
b Rotate the device (180°) parallel to the surface then press **"MODE"** button again, the screen will display countdown, wait until screen countdown reach **"0"** and show **"CAL3"**.
c Position the device right side vertically (-90°) on a level surface, press **"MODE"** button again, the screen will display countdown, wait until screen countdown reach **"0"** and show **"CAL4"**.
d Rotate the device 180° parallel vertically to the surface (+90°) then press **"MODE"** button again, the screen will display countdown, wait until screen countdown reach **"0"**.
3. Calibration Done.

Note: Ensure the device is kept still during calibration

Caution

Digi-Pas® device is calibrated in the factory for maximum accuracy. User can re-calibrate when necessary. Please refer to www.digipas.com for video demonstration on how to calibrate the device.

Calibration Illustration



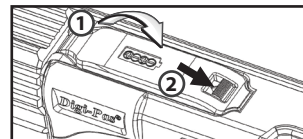
Technical Specification

Dimension	: 600 x 30 x 60
Weight	: 850 Gram
Operating Temp	: -20°C ~ +60°C
Storage Temp	: -30°C ~ +70°C
Battery	: 4 x AAA 1.5V

Cleaning

- Keep the level dry and clean. Remove any moisture or dirt with a soft, dry cloth.
- Do not use harsh chemicals, strong detergents or cleaning solvents to clean the level.
- Do not submerge device in water while cleaning. Wiping or cleaning on device surface is sufficient

Battery Compartment



Push the battery compartment down and hold it in that position then use your finger to push the tab back to the side as shown till you hear a soft click.

Warranty

Digi-Pas® Digital level is warranted to the original purchaser to be free from defects in workmanship and material. JSB Tech will, at its option, repair or replace any defective part which may malfunction under normal and proper use within a warranty period of 1 (one) year from the date of shipment. This one year warranty clause is NOT applicable to European Union (EU) member states. Purchases made in EU member states will be covered by the existing consumer laws across the European Union, which provide statutory warranty rights in addition to the coverage of one year warranty period. The foregoing warranty shall not apply to defects resulting from misuse, abuse or transfer by the Buyer, Buyer-supplied software or interfacing, unauthorized modification or operation outside of environmental specifications for the product. JSB Tech does not warrant that the operation of the instrument software, or firmware, will be uninterrupted or error free. The exclusive remedy under any and all warrants and guarantees, expressed herein, and we shall not be liable for damages from loss or delay of equipments uses, consequential, or incidental damage. No other warranty is expressed or implied. JSB Tech specifically disclaims the implied warranties of merchantability and fitness for a particular purpose.

Distributed by :

Manufactured by
JSB TECH Pte Ltd

Email: info@digipas.com

www.digipas.com